



i10

  
**HYUNDAI** | NEW THINKING.  
NEW POSSIBILITIES.



# NEW THINKING. NEW POSSIBILITIES.

---

At the heart of the Hyundai brand is the desire to think differently and challenge convention. This has led us to distribute cars in over 190 different countries across the world. Our forward thinking philosophy means we're always evolving our approach, to create cars that exceed your expectations. It means that every Hyundai has been engineered to surprise you with its built-in quality. To complement you with its crisply fluidic design. And to protect you, your family and your passengers with its strength. Prepare to enjoy a world of new possibilities.





Inspired by style and engineered with real quality, the i10 carries the fun-factor on every trip. It's ready to become whatever you want it to be.



Car shown i10 Premium SE in Stardust Grey metallic paint.





## A streetwise city car that radiates confidence from every angle.

Before your i10 got a taste for adventure, it went on a fascinating journey from a designer's sketchbook to a road near you. The result is stylish and bold – a true original in every sense.

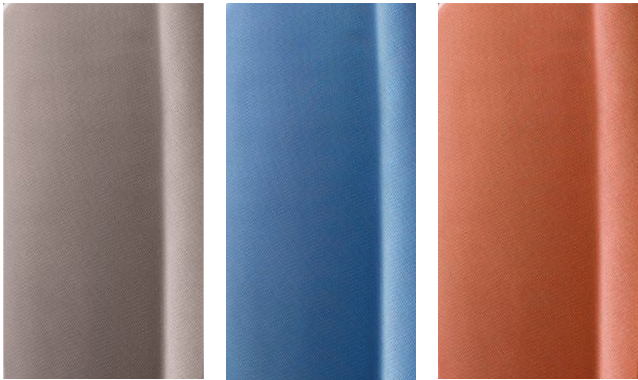
## Welcome to fluidic design

The i10's outfit is a chic steel shell which you can personalise with a choice of colours. It arrives with daytime running lights, stylish wheel designs and a signature hexagonal grille. Its fluidic sculpture ensures that it's dressed to impress, and its low, wide and long body gives it the style to carry off every occasion.



# Show your personality with an array of colours to make it pop.

The i10 loves attention - give it the chance to stand out in the bright lights of the city by selecting the tones that suit you best. From concept to construction, this small car stands tall and proud in every way.



\* Please see page 28 for interior colour availability.

We have matched a selection of interior colours to complement your exterior choice\*. We love tones that'll make the layout really stand out and highlight the bold simplicity of the design. Chill out with blue or calm beige, or spark it up with sizzling orange. Unparalleled build quality and excellent sound-proofing ensure a relaxing drive, while its quality also shines through in finer details like the attractive fabrics and tactile surfaces.



Car shown i10 Premium with Blue interior.





## A twinkle in its headlights and a boot load of personality.

Show your i10 a good time. Pick up your friends and go on a fun drive that'll test its nimble steering to the max.

## Explore the city

With great agility and fine-tuned suspension you can expect pure refinement on the road, with silky smooth handling on every trip. Zip down busy streets, light up the city and enjoy the ride.



# The agility of a small car but the features of a bigger one.

The i10 comes with all the answers. It combines the nimble handling of a city car with a high level of comfort, so you can experience the best of both worlds.

## Comfort and convenience

Make the most of a breezy drive in the S Air, SE and Premium thanks to air conditioning, and enjoy climate control as standard on Premium SE. Choose the optional connectivity pack on SE, or select one of the Premium models to enjoy steering wheel audio and phone controls, plus Bluetooth® connectivity with voice recognition. After each action-packed day, you might also welcome the assistance of cruise control on the SE and Premium manual models, while keyless entry on the Premium SE means you'll never waste time fumbling with keys. You'll also benefit from a heated leather steering wheel and heated front seats to keep you nice and toasty in spite of the British weather.



Car shown i10 Premium SE with Orange interior.





## What can you do between refills? Well, quite a lot as it turns out.

You've found the car of your dreams, and you're already excited about the next adventure. With fewer stops and extra money saved at the pumps, you can ramp up the fun-factor.



Give your social scene a boost with more time between stops thanks to the efficient 1.0 and 1.2 engines which emit just 108 g/km and 114 g/km of CO<sub>2</sub> respectively on the manual models. In the SE Blue Drive there's clever technology like Intelligent Stop & Go (ISG) which help it achieve 98 g/km CO<sub>2</sub> and up to 65.7 miles per gallon, on a combined cycle.



# This is where you and your car work as a team.

If you can find time for shopping, it will fit in the bags. If you can squeeze in a camping trip, it'll find room for the tent. And if you can find space for a holiday, it'll slot in your suitcases.

## Watch this space

As well as excellent luggage space and versatility, there are also 5 seats, or 4 in the SE Blue Drive, and plenty of head, leg and shoulder room. Invite your friends, fill those gaps and enter a world of adventure.



Car shown i10 Premium SE 1.2 in Stardust Grey metallic paint.





## Like a featherweight boxer, the i10 is small but very tough.

You'd certainly count on it to protect you in a time of need. While it may be surrounded by bigger, louder cars, it's right up alongside them when it comes to keeping you safe.



When it comes to features it packs a heavy punch with 6 airbags, including curtain airbags, rear ISOfix child seat anchorage points and Electronic Stability Programme (ESP). The Anti-lock Brake System (ABS) provides greater control under hard braking, while the Tyre Pressure Monitoring System (TPMS) lets you know when your tyre pressure is low.









## i10 S

A great level of standard equipment with cutting edge features and plenty of handy benefits.

- 14" steel wheels
- 5 seats
- Anti-lock Brake System (ABS)
- Brake Assist System (BAS)
- Central locking
- Cloth seat trim (beige)
- Daytime running lights
- Electric front windows
- Electronic Stability Programme (ESP)
- Front passenger airbag deactivation switch
- Front power outlet x2
- Front, front side and curtain airbags
- Height adjustable steering column
- Rear ISOfix child seat anchorage points
- Trip computer
- Tyre Pressure Monitoring System (TPMS)
- Tyre repair kit
- USB and aux connection

### S Air

FEATURES OVER S

- Air conditioning



## i10 SE

Packed with loads of extra features, while the SE Blue Drive delivers an efficiency boost.

### SE OFFERS THE FOLLOWING FEATURES OVER S AIR

- Black B pillar
- Body coloured door handles and mirrors
- Cloth seat trim (blue)
- Cruise control with speed limiter (manual only)
- Driver and passenger sun visor and vanity mirror
- Driver's seat height adjustment
- Electric adjustable and heated door mirrors
- Electric rear windows
- One touch down driver's window control
- Remote central locking
- Space saver emergency spare wheel

### SE Blue Drive

FEATURES OVER SE

- 13" steel wheels
- 4 seats
- Climate control
- Intelligent Stop & Go (ISG)





## i10 Premium

Stylish and practical additional features that are simply perfect for the city.

### PREMIUM OFFERS THE FOLLOWING FEATURES OVER SE

- |  |  |   |
|--|--|---|
| • 14" alloy wheels                               | • Front driver electric window anti-trap mechanism | • Leather wrapped gear knob with chrome effect insert |
| • 4 speakers (front and rear)                    | • Front fog lights                                 | • Leather wrapped steering wheel                      |
| • Bluetooth® connectivity with voice recognition | • Front static cornering lights                    | • LED daytime running lights                          |
| • Chrome effect interior door handles            | • Hill-start Assist Control (HAC)                  | • Side body moulding (grey)                           |
| • Door mirror intergrated Indicators             | • Illuminated glove box                            | • Steering wheel audio and phone controls             |
| • Emergency Stop Signal (ESS)                    |  |   |



## i10 Premium SE

The very best for style and comfort – a car that excels in every environment.

### PREMIUM SE OFFERS THE FOLLOWING FEATURES OVER PREMIUM

- |                                       |                                       |   |
|---------------------------------------|---------------------------------------|---|
| • 15" alloy wheels                    | • Electric tilt & slide glass sunroof | • Keyless entry with engine start/stop button |
| • Chrome effect exterior door handles | • Heated front seats                  | • Rear parking sensors                        |
| • Climate control                     | • Heated steering wheel               |   |

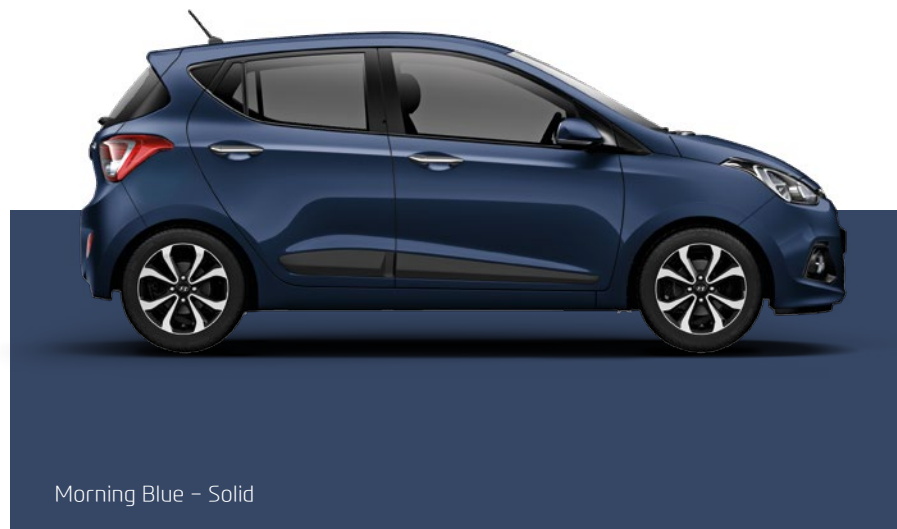




Polar White – Solid



Sleek Silver – Metallic



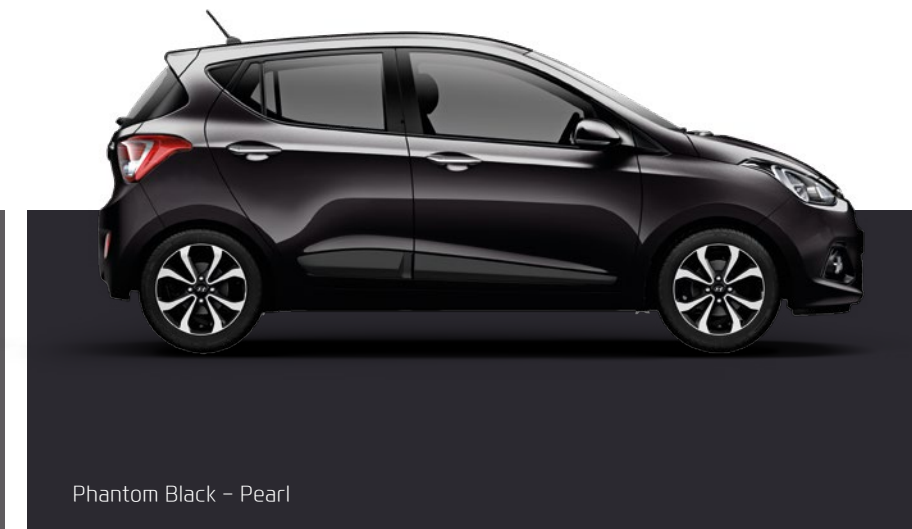
Morning Blue – Solid



Aqua Sparkling – Metallic (Available on SE, SE Blue Drive, Premium & Premium SE)



Stardust Grey – Metallic

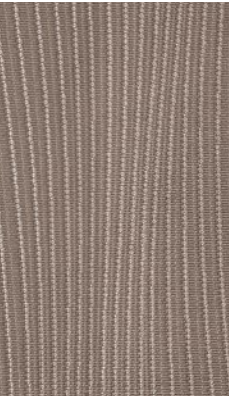
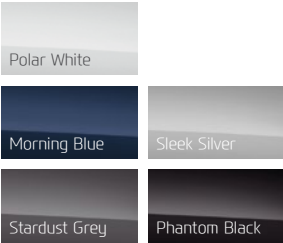


Phantom Black – Pearl



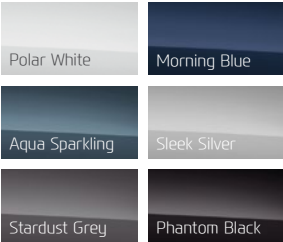
Beige CLOTH SEATS

Available on S & S Air with these exterior colours:



Blue CLOTH SEATS

Available on SE, SE Blue Drive, Premium & Premium SE with these exterior colours:



Orange CLOTH SEATS

Available on SE, SE Blue Drive, Premium & Premium SE with this exterior colour:



Keep your options open

Go with the connectivity pack on the SE and get Bluetooth® connectivity with voice recognition, steering wheel audio and phone controls and rear speakers. If you select the Premium model then the winter pack might be for you. It gives you much more comfort when winter bites. In those freezing months, you'll be especially grateful for the heated leather steering wheel and heated front seats.



Connectivity Pack: Bluetooth® connectivity with voice recognition, steering wheel audio and phone controls and rear speakers



Winter Pack: Heated leather steering wheel and heated front seats





## Go the extra mile

Why not start with a style boost and opt for the eye-catching 15" alloy wheels or chrome tailgate trim? For practicality the ice and sun screen or mud flap set make great additions. Maybe you're looking to bring your dog along for the ride? If that's the case, go for the dog guard and possibly a carpet mat set to keep the interior clean. Tired of interrupting your journey to make a phone call? Keep in touch on the go with the Parrot MKi9200 Bluetooth® accessory, featuring voice recognition, steering wheel controls and a 2.4 inch high-resolution colour screen. Glance through our variety of options and customise your i10 according to your needs.

Rear bumper protector - moulded



Ice and sun screen



Entry guards



Parking sensors - rear



Rubber mat set



Boot liner



Mud flaps (set available for front and rear)



15" alloy wheels



**Carpet mat set:** Available in black, black with orange or black with blue trim (matching interior options)



**Parrot MKi9200:** Voice recognition, steering wheel controls and 2.4 inch high-resolution colour screen



	S	S Air	SE	SE Blue Drive	Premium	Premium SE
ENGINE & TRANSMISSION						
1.0 Petrol – 5 Speed Manual Transmission	●	●	●	●	●	–
1.2 Petrol – 5 Speed Manual Transmission	–	–	●	–	●	●
1.2 Petrol – 4 Speed Automatic Transmission	–	–	●	–	●	●
Intelligent Stop & Go (ISG)	–	–	–	●	–	–
EXTERIOR						
13" Steel Wheels with Wheel Covers	–	–	–	●	–	–
14" Steel Wheels with Wheel Covers	●	●	●	–	–	–
14" Alloy Wheels	–	–	–	–	●	–
15" Alloy Wheels	–	–	–	–	–	●
Black B Pillar	–	–	●	●	●	●
Black Door Handles and Mirrors	●	●	–	–	–	–
Body Coloured B Pillar	●	●	–	–	–	–
Body Coloured Door Handles and Mirrors	–	–	●	●	●	–
Chrome Effect Door Handles	–	–	–	–	–	●
Door Mirror Integrated Indicators	–	–	–	–	●	●
Rear Spoiler with Integral Brake Light	●	●	●	●	●	●
Side Body Moulding (Grey)	–	–	–	–	●	●
Solid Paint	●	●	●	●	●	●
INTERIOR						
Chrome Effect Interior Door Handles	–	–	–	–	●	●
Courtesy Light	●	●	●	●	●	●
Front and Rear Door Pockets	●	●	●	●	●	●
Illuminated Glove Box	–	–	–	–	●	●
Leather Wrapped Gear Knob with Chrome Effect Insert	–	–	–	–	●	●
Leather Wrapped Steering Wheel	–	–	–	–	●	●
Luggage Compartment Light	–	–	●	●	●	●

	S	S Air	SE	SE Blue Drive	Premium	Premium SE
SEATING						
4 Seats	–	–	–	●	–	–
5 Seats	●	●	●	–	●	●
Adjustable Head Restraints	●	●	●	●	●	●
Cloth Seat Trim (Beige)	●	●	–	–	–	–
Cloth Seat Trim (Blue)	–	–	●	●	●	●
Cloth Seat Trim (Orange)*	–	–	▲	–	▲	▲
Driver's Seat Height Adjustment	–	–	●	●	●	●
Heated Front Seats	–	–	–	–	○	●
Split Folding Rear Seats (60/40)	●	●	●	●	●	●
VENTILATION & VISIBILITY						
Air Conditioning	–	●	●	–	●	–
Climate Control	–	–	–	●	–	●
Daytime Running Lights	●	●	●	●	–	–
Electric Tilt and Slide Glass Sunroof	–	–	–	–	–	●
Front Fog Lights	–	–	–	–	●	●
Front Static Cornering Lights	–	–	–	–	●	●
Intermittent Front Windscreen Wipers (2 Speed Non Variable)	●	●	●	●	●	●
LED Daytime Running Lights	–	–	–	–	●	●
CONVENIENCE						
Cruise Control (Manual Variants Only)	–	–	●	●	●	●
Driver and Passenger Sun Visor with Ticket Holder	●	●	●	●	●	●
Driver and Passenger Sun Visor with Vanity Mirror	–	–	●	●	●	●
Electric Adjustable and Heated Door Mirrors	–	–	●	●	●	●
Electric Front Windows	●	●	●	●	●	●
Electric Rear Windows	–	–	●	●	●	●

	S	S Air	SE	SE Blue Drive	Premium	Premium SE
Front Console Storage Cover	–	–	–	–	●	●
Front Door, Front Centre Console and Rear Door Bottle Holders	●	●	●	●	●	●
Front Driver Electric Window Anti-Trap Mechanism	–	–	–	–	●	●
Front Power Outlet x2	●	●	●	●	●	●
Heated Steering Wheel	–	–	–	–	○	●
Height Adjustable Steering Column	●	●	●	●	●	●
One Touch Down Driver's Window Control	–	–	●	●	●	●
Power Assisted Steering	●	●	●	●	●	●
Rear Parking Sensors	–	–	–	–	–	●
Space Saver Emergency Spare Wheel†	○	○	●	●	●	●
Tyre Repair Kit	●	●	–	–	–	–
TECHNOLOGY AND ENTERTAINMENT						
2 Speakers (Front)	●	●	●	●	●	●
4 Speakers (Front and Rear)	–	–	○	–	●	●
Bluetooth® Connectivity with Voice Recognition†	–	–	○	–	●	●
Steering Wheel Audio and Phone Controls	–	–	○	–	●	●
Stereo RDS Radio/CD Player with MP3 Compatibility and Clock	●	●	●	●	●	●
Trip Computer	●	●	●	●	●	●
USB and Aux Connection	●	●	●	●	●	●
SAFETY AND SECURITY						
Anti-lock Brake System (ABS)	●	●	●	●	●	●
Brake Assist System (BAS)	●	●	●	●	●	●
Central Locking	●	●	–	–	–	–
Childproof Rear Door Locks	●	●	●	●	●	●
Electronic Stability Programme (ESP)	●	●	●	●	●	●
Emergency Stop Signal (ESS)	–	–	–	–	●	●
Engine Immobiliser	●	●	●	●	●	●

	S	S Air	SE	SE Blue Drive	Premium	Premium SE
Front and Rear Seat Belt Reminder	●	●	●	●	●	●
Front, Front Side and Curtain Airbags	●	●	●	●	●	●
Front Passenger Airbag Deactivation Switch	●	●	●	●	●	●
Front Seatbelt Electric Type Pre-tensioners	●	●	●	●	●	●
Height Adjustable Front Seatbelts	–	–	–	–	●	●
Hill-start Assist Control (HAC)	–	–	–	–	●	●
Keyless Entry with Engine Start/Stop Button	–	–	–	–	–	●
Locking Wheel Nuts	–	–	–	–	●	●
Rear ISOFix Child Seat Anchorage	●	●	●	●	●	●
Remote Central Locking	–	–	●	●	●	●
Speed and Impact Sensing Auto Door Unlocking	–	–	●	●	●	●
Tyre Pressure Monitoring System (TPMS)	●	●	●	●	●	●
Vehicle Stability Management (VSM)	●	●	●	●	●	●
CUSTOMER OPTIONS						
Connectivity Pack: Bluetooth® Connectivity with Voice Recognition, Steering Wheel Audio and Phone Controls and 4 Speakers (Front and Rear)	–	–	○	–	–	–
Metallic / Pearl Paint	○	○	○	○	○	○
Space Saver Emergency Spare Wheel	○	○	–	–	–	–
Winter Pack: Heated Leather Steering Wheel and Heated Front Seats	–	–	–	–	○	–
WARRANTY**						
Five Year Unlimited Mileage Warranty Five Year Roadside Assistance Five Year Annual Vehicle Health Checks	●	●	●	●	●	●
10 Years† Anti-Perforation Warranty	●	●	●	●	●	●

● Standard   ○ Optional at extra cost   ▲ Optional at no extra cost  
\* Orange interior optional with Stardust Grey exterior paint colour.  
† Available on cars produced from February 2015. Please contact your local dealer for details.  
‡ Please contact your dealer for the latest list of compatible phones.  
\*\* 5 Year Unlimited Mileage Warranty terms and exclusions apply. Please see www.hyundai.co.uk or ask your local dealer for full terms and exclusions.

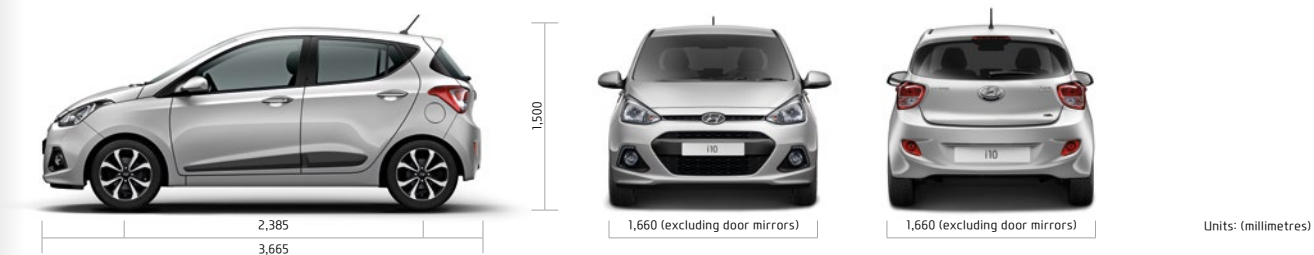


	1.0 Petrol 5 Speed Manual	1.0 Petrol (4 seat, Blue Drive) 5 Speed Manual	1.2 Petrol 5 Speed Manual	1.2 Petrol 4 Speed Automatic
ENGINE				
Type	3 Cylinder DOHC	3 Cylinder DOHC	4 Cylinder DOHC	4 Cylinder DOHC
	12 valve	12 valve	16 valve	16 valve
Displacement (cc)	998	998	1,248	1,248
Bore & stroke (mm)	71.0 x 84.0	71.0 x 84.0	71.0 x 78.8	71.0 x 78.8
Compression ratio	10.5:1	10.5:1	10.5:1	10.5:1
Max power (kW/BHP [PS])	49kW / 65 (66) @ 5,500rpm	49kW / 65 (66) @ 5,500rpm	64kW / 86 (87) @ 6,000rpm	64kW / 86 (87) @ 6,000rpm
Torque (Nm/lbs ft)	95 / 70 @ 3,500rpm	94 / 69 @ 3,500rpm	120 / 88 @ 4,000rpm	120 / 88 @ 4,000rpm
0-62mph (seconds)	14.9	15.1	12.3	13.8
Top speed (mph)	96	96	109	101
SUSPENSION				
Front / Rear	MacPherson Strut / Coupled Torsion Beam Axle (CTBA)			
STEERING				
System	Motor Drive Power Steering (MDPS)			
Steering wheel lock to lock turns	2.9			
Turning radius (metres)	4.78			
BRAKES				
System	ABS System with front and rear discs			
Front	Ventilated disc			
Rear	Solid disc			
TYRES				
S / S Air	175/65 R14	-	-	-
SE	175/65 R14	-	175/65 R14	175/65 R14
SE Blue Drive	-	155/70 R13	-	-
Premium	175/65 R14	-	175/65 R14	175/65 R14
Premium SE	-	-	185/55 R15	185/55 R15
WHEELS				
S / S Air	5.5J x 14 (steel)	-	-	-
SE	5.5J x 14 (steel)	-	5.5J x 14 (steel)	5.5J x 14 (steel)
SE Blue Drive	-	4.5J x 13 (steel)	-	-
Premium	5.5J x 14 (alloy)	-	5.5J x 14 (alloy)	5.5J x 14 (alloy)
Premium SE	-	-	6.0J x 15 (alloy)	6.0J x 15 (alloy)

	1.0 Petrol 5 Speed Manual	1.0 Petrol (4 seat, Blue Drive) 5 Speed Manual	1.2 Petrol 5 Speed Manual	1.2 Petrol 4 Speed Automatic
DIMENSIONS				
Overall length (mm)	3,665			
Overall width (mm)	1,660			
Overall height (mm)	1,500			
Wheelbase (mm)	2,385			
Track – front (mm)	1,467	1,491	1,467	1,467
Track – rear (mm)	1,480	1,504	1,480	1,480
WEIGHTS & CAPACITIES				
Luggage capacity VDA (litres) – Seats up	S / S Air – 252 SE, Premium & Premium SE – 218			
Luggage capacity VDA (litres) – Seats down	S / S Air – 1,046 SE, Premium & Premium SE – 1,012			
Kerb weight (kg)	933	933	941	961
Gross vehicle weight (kg)	1,420	1,310	1,450	1,455
Noseweight (kg)	75			
Max roof weight (kg)	60			
Fuel tank capacity (litres)	40			
FUEL CONSUMPTION & EMISSIONS				
Urban mpg (l/100km)*	47.1 (6.0)	55.4 (5.1)	43.5 (6.5)	35.3 (8.0)
Extra urban mpg (l/100km)*	70.6 (4.0)	76.3 (3.7)	68.9 (4.1)	55.4 (5.1)
Combined mpg (l/100km)*	60.1 (4.7)	65.7 (4.3)	57.6 (4.9)	45.6 (6.2)
CO <sub>2</sub> Emissions (g/km) †	108	98	114	142

\* The results given above do not express or imply any guarantee of fuel consumption of any model to which this brochure refers. The driver's style and road traffic conditions, as well as the extent to which the vehicle has been driven and the standard of maintenance, will affect its fuel consumption.  
† g/km = grams of emitted substance per kilometre travelled. CO<sub>2</sub> = Carbon Dioxide

i10 DIMENSIONS







## Hyundai Motor Finance

Hyundai Motor Finance provides a range of products to make the purchase of your Hyundai even more accessible. To meet your requirements our plans are simple but offer you the same quality and flexibility as your new Hyundai. Applying for a finance plan through your local Hyundai dealer is easy and they will support you in choosing the right plan for your needs.

As a customer your satisfaction is at the heart of our business, and whilst you are able to manage your account online, we are only a phone call away should you require any help or assistance. We offer two main products to assist in your car purchase:

### CONDITIONAL SALE

Is a simple and traditional way to finance your car over a fixed period. You decide to fund the entire purchase price or put down a deposit and as your interest rate is fixed you'll pay the same amount each month. After all repayments have been made you'll own the car.

### PERSONAL CONTRACT PURCHASE (PCP)

Personal Contract Purchase could make it easier for you to get behind the wheel of your Hyundai, it may also help you to change your car on a more regular basis.

The way it works is simple, you decide what level of deposit to pay. From nil, up to a maximum of 40%. You also decide your repayment period (typically 25 or 37 months) and set your anticipated annual mileage. This will determine your optional final payment.

You will then make fixed monthly repayments based on the outstanding balance and interest, less your optional final payment, and at the end of your monthly repayment period you will have three choices: return, retain or renew.

**RETURN:** you can hand the car back to us, with nothing further to pay (subject to fair wear and tear, and/or excess mileage charges may apply).

**RETAIN:** you can pay the optional final payment and the car is yours.

**RENEW:** you can part exchange the car, using any equity over and above the optional final payment as deposit on your next car (equity is anticipated, but this cannot be guaranteed).

\* You will not own the vehicle until all payments are made. T&Cs apply. Finance subject to status. Applicants must be 18 or over. Guarantee/Indemnity may be required. Hyundai Motor Finance, RH1 1SR



## 5 Year Unlimited Mileage Warranty

The passion and belief we have in the quality of our products mean we can offer an aftercare package to match. Visit your local Hyundai Authorised Repairer and we'll attend to you straight away, giving you a fully-inclusive quote for the work you've requested.

Only Hyundai Trained Technicians will carry out this work, and we'll also check for any software updates to keep your car running smoothly. You can also be sure that we'll only use Hyundai Genuine Parts which have been thoroughly tested and approved. On collection, we'll explain your invoice and call you within 3 days of your appointment to check you're completely satisfied.

As the people who know your car best, the quality of our service is second to none.

### 5 YEAR UNLIMITED MILEAGE WARRANTY

A manufacturer backed, unlimited mileage, 5 Year Warranty\* protects your Hyundai against manufacturing defects\*\* and is fully transferable to the next owner.

### 5 YEAR ROADSIDE ASSISTANCE

24 hour roadside assistance should you ever need it, anywhere in the UK or Channel Islands.

### 5 YEAR ANNUAL VEHICLE HEALTH CHECKS

A free, expert visual inspection by your Hyundai dealer on key areas of your car, to help sort any problems and ensure trouble-free motoring.

### ADDITIONAL AFTERCARE

A 10 year Anti-perforation warranty against perforation of the bodywork, from the inside of the panel outwards.

\* 5 Year Unlimited Mileage Warranty terms and exclusions apply. Please see [www.hyundai.co.uk](http://www.hyundai.co.uk) or ask your local dealer for full terms and exclusions.

\*\* Vehicles used for taxi or private hire are covered by a 5 year, 100,000 mile warranty. Cover excludes fair wear and tear.





## Motability Plans

The Motability plan will enable some of you to purchase a Hyundai at a preferential rate. If you receive the Higher Rate Mobility Component of the Disability Living Allowance, you're entitled to access this excellent scheme. In recognition of your requirements, many Hyundai models can be ordered on the 3 year Contract Hire Scheme.

You'll benefit from advantageous features like power steering, height-adjustable driver's seat and automatic gearbox, which all come as standard.

Most of our dealers are Motability Accredited, so just contact them and they'll be happy to help. If you'd like to read about the scheme in more depth, simply visit [www.motability.co.uk](http://www.motability.co.uk)



## Ownership

We're always thinking about how to make owning a Hyundai an enjoyable experience and that's exactly what you get with a Hyundai Fixed Price Service Plan. As a valued customer, we'll take care of all your Hyundai's scheduled servicing for up to 5 years or 50,000 miles.

Being covered by a Hyundai Fixed Price Service Plan means:

- Your Hyundai's servicing is covered in a single payment that can be included in your finance agreement
- You have a choice to cover your servicing for 3 or 5 years\*
- Only trained Technicians will expertly assess and service your Hyundai
- Should any parts need replacing during your servicing, your Hyundai will be fitted with Hyundai Genuine Parts

For more information, simply contact your local Hyundai dealer or our Customer Services team, who will be happy to help.

\* Price varies according to model, fuel type and mileage. Only available on vehicles registered on or after 1st March 2013. Price includes VAT where applicable. Time and mileage restrictions apply. Excludes seasonal checks. Terms and conditions apply.



## MyHyundai

MyHyundai is a complimentary and exclusive owners' club with a variety of unique benefits that'll make your ownership experience even more enjoyable.

As well as amazing offers that range from incredible getaways to indulgent gifts, you'll also be able to set your own alerts and preferences, while storing all your car's details in one, easily-accessible place.



## Staying In Touch

We're committed to offering you the very best. That means, as well as delivering impressive cars, we'll also deliver helpful advice and service, every step of the way. Simply contact us on **0800 981 981** or visit our website at [www.hyundai.co.uk](http://www.hyundai.co.uk)



Keep up to date with our news on our Facebook page at [www.facebook.com/hyundaiuk](https://www.facebook.com/hyundaiuk)



See all our latest tweets at [www.twitter.com/hyundai\\_uk](https://www.twitter.com/hyundai_uk)



View our latest videos at [www.youtube.com/user/hyundaimotoruk](https://www.youtube.com/user/hyundaimotoruk)

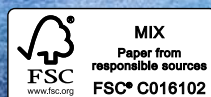


Specifications shown in this brochure are based upon the latest available information at the time of printing. The colours and finishes reproduced in this brochure are subject to the limitations of the printing process and may vary from the actual colour and paint finish.

In line with our policy of continual product improvement Hyundai Motor UK Ltd reserves the right to make changes at any time, without notice, to prices, colours, material, design, shape, specifications and models, and to discontinue items. For the latest details, please consult your Hyundai dealer.



Your local Hyundai dealer:



This brochure is printed on FSC® (Forestry Stewardship Council) certified paper which has been produced at a mill and printed by a printer that has been certified to the ISO 14001 environmental standard using vegetable oil based inks and aqueous based coatings. It can be disposed of by recycling, incineration for recovery or is biodegradable.

Customer enquiries: 0800 981 981

Model on front cover: i10 Premium SE in Stardust Grey metallic paint, HB2461 02/15



Hyundai Motor UK Ltd

728 London Road, High Wycombe, Bucks HP11 1HE

T: 01494 428600 F: 01494 428699 [www.hyundai.co.uk](http://www.hyundai.co.uk)



# i10 Price Guide

July 2015

	FUEL TYPE	CO <sub>2</sub> EMISSIONS G/KM	INSURANCE GROUP (1-50)	VED BAND	BASIC RETAIL PRICE	VAT	RETAIL PRICE	RECOMMENDED ON THE ROAD PRICE	P11D VALUE	BIK TAX %
<b>S</b>										
1.0 66PS	P	108	1	B	6,888.33	1,377.67	8,266.00	8,895.00	8,840.00	16
<b>S Air</b>										
1.0 66PS	P	108	1	B	7,455.00	1,491.00	8,946.00	9,575.00	9,520.00	16
<b>SE</b>										
1.0 66PS	P	108	1	B	7,788.33	1,557.67	9,346.00	9,975.00	9,920.00	16
1.2 87PS	P	114	4	C	8,205.00	1,641.00	9,846.00	10,475.00	10,420.00	17
1.2 87PS auto	P	142	4	F	8,625.83	1,725.17	10,351.00	11,125.00	10,925.00	23
<b>SE Blue Drive</b>										
1.0 66PS	P	98	1	A	7,996.67	1,599.33	9,596.00	10,225.00	10,170.00	14
<b>Premium</b>										
1.0 66PS	P	108	1	B	8,371.67	1,674.33	10,046.00	10,675.00	10,620.00	16
1.2 87PS	P	114	4	C	8,788.33	1,757.67	10,546.00	11,175.00	11,120.00	17
1.2 87PS auto	P	142	4	F	9,209.17	1,841.83	11,051.00	11,825.00	11,625.00	23
<b>Premium SE</b>										
1.2 87PS	P	114	5	C	9,721.67	1,944.33	11,666.00	12,295.00	12,240.00	17
1.2 87PS auto	P	142	5	F	10,142.50	2,028.50	12,171.00	12,945.00	12,745.00	23
<b>OPTIONAL EXTRAS</b>										
<b>Connectivity Pack:</b> Bluetooth® Connectivity with Voice Recognition, Steering Wheel Audio and Phone Controls and 4 Speakers (Front and Rear)					145.83	29.17	175.00			
<b>Orange Cloth Seat Trim</b> (Optional on SE, Premium and Premium SE with Stardust Grey exterior paint)					0.00	0.00	0.00			
<b>Metallic/Pearl Paint</b>					429.17	85.83	515.00			
<b>Space Saver Emergency Spare Wheel</b> (Optional on S and S Air)					41.67	8.33	50.00			
<b>Winter Pack:</b> Heated Leather Steering Wheel and Heated Front Seats (Available on Premium)					162.50	32.50	195.00			
<b>Fixed Price Service Plan – Up to 20,000 miles over 2 years*</b>					207.50	41.50	249.00			
<b>Fixed Price Service Plan – Up to 30,000 miles over 3 years*</b>					290.83	58.17	349.00			
<b>Fixed Price Service Plan – Up to 50,000 miles over 5 years*</b>					540.83	108.17	649.00			



**NEW THINKING.  
NEW POSSIBILITIES.**



# i10 Model Details

## S

S offers the following features as standard:

- 14" Steel Wheels
- 5 Seats
- Anti-Lock Brake System (ABS)
- Brake Assist System (BAS)
- Central Locking
- Cloth Seat Trim (Beige)
- Daytime Running Lights
- Electric Front Windows
- Electronic Stability Programme (ESP)
- Front Passenger Airbag Deactivation Switch
- Front Power Outlet x2
- Front, Front Side And Curtain Airbags
- Height Adjustable Steering Column
- Rear ISOfix Child Seat Anchorage Points
- Trip Computer
- Tyre Pressure Monitoring System (TPMS)
- Tyre Repair Kit
- USB and Aux Connection
- 5 Year Unlimited Mileage Warranty\*
- 10 Years' Anti-Perforation Warranty

## S Air

S Air offers the following feature over S:

- Air Conditioning

## SE

SE offers the following features over S Air:

- Body Coloured Door Handles and Mirrors
- Cloth Seat Trim (Blue)
- Cruise Control With Speed Limiter (Manual Only)
- Driver and Passenger Sun Visor and Vanity Mirror
- Driver's Seat Height Adjustment
- Electric Adjustable and Heated Door Mirrors
- Electric Rear Windows
- One Touch Down Driver's Window Control
- Remote Central Locking
- Space Saver Emergency Spare Wheel\*

## SE Blue Drive

SE Blue Drive benefits from a collection of smart technologies to reduce CO<sub>2</sub> and improve mpg:

- 13" Steel Wheels
- 4 Seats
- Climate Control
- Intelligent Stop & Go (ISG)
- Tyre Repair Kit

SE Blue Drive removes the following over SE:

- Space Saver Emergency Spare Wheel

## Premium

Premium offers the following features over SE:

- 14" Alloy Wheels
- 4 Speakers (Front and Rear)
- Bluetooth® Connectivity with Voice Recognition\*\*
- Chrome Effect Interior Door Handles
- Door Mirror Integrated Indicators
- Emergency Stop Signal (ESS)
- Front Driver Electric Window Anti-trap Mechanism
- Front Fog Lights
- Front Static Cornering Lights
- Hill-start Assist Control (HAC)
- Illuminated Glove Box
- Leather Wrapped Gear Knob with Chrome Effect Insert
- Leather Wrapped Steering Wheel
- LED Daytime Running Lights
- Side Body Moulding (Grey)
- Steering Wheel Audio and Phone Controls

## Premium SE

Premium SE offers the following features over Premium:

- 15" Alloy Wheels
- Chrome Effect Exterior Door Handles
- Climate Control
- Electric Tilt & Slide Glass Sunroof
- Heated Front Seats And Steering Wheel
- Keyless Entry With Engine Start/Stop Button
- Rear Parking Sensors

\* For full service package details and terms and conditions, please speak to your dealer or visit [www.hyundai.co.uk](http://www.hyundai.co.uk).

† 5 Year Warranty terms and exclusions apply. Please see [www.hyundai.co.uk](http://www.hyundai.co.uk) for terms and exclusions.

‡ Available on cars produced from February 2015. Please contact your local dealer for details.

\*\* Please contact your dealer for the latest list of compatible mobile phones.

All prices are in Great British Pounds and are correct at time of print. For full specifications and features please check with your local dealer or visit [www.hyundai.co.uk](http://www.hyundai.co.uk).

